

In July 2008, Czech Republic will welcome world orienteering representatives during World Orienteering Championships 2008, with the Event Centre located in Olomouc. Among the range of training opportunities for WOC 2008, Hana orienteering Ltd. has been entrusted by the WOC Organising Committee to organise 1<sup>st</sup> Official WOC 2008 Training Camp in October 2007.

We would like to invite you to come and train in the region of Zlaté Hory which offers a selection of high-quality maps on beautiful and technically challenging terrains, closely resembling WOC 2008 terrains. The Sport Centre „BOHEMALAND“, a famous destination for preparatory and training stays of sport teams, will be at full disposition for all participants of the training camp.

Robert (Brko) Zdráhal  
HANÁ ORIENTEERING Ltd.

**October 8-14, 2007**

Sport Centre „BOHEMALAND“, Zlaté Hory, Czech Republic  
(100 km north of WOC 2008 host city Olomouc)



#### TRANSPORT

On individual request we can organize transport for your team, including transfers from PostFinance WC race in Switzerland to WOC training camp on Sunday October 8, and/or bus transport from nearest international airports (Prague, Vienna, Bratislava, Krakow) to Switzerland, than to WOC training camp and finally back again to your preferred airport.

#### TRAINING POSSIBILITIES

The Bohemalnd Centre is located right on the orienteering map of the surrounding area including some 15 km<sup>2</sup> of mapped forest. You can find total 8 high-quality O-maps within 30 kms from Bohemalnd, including maps from Czech Elite Event to be held in September 2007.

Two official training sessions with SportIdent time-keeping will be offered every day during the training camp week, with exception for the weekend of October 13-14 when you can take part in international O-event „Czech Meeting 2007“, with its event centre in a close proximity to Bohemalnd and organised on maps and terrains from Czech Middle Distance Championships 2007.

#### CONTACT AND INFORMATION:

Robert "Brko" Zdrahal E-mail: [brko@hanaorienteering.com](mailto:brko@hanaorienteering.com)  
Phone: +420 602 805 696

For more information please visit or [www.hanaorienteering.com/english/](http://www.hanaorienteering.com/english/)  
or [www.woc2008.cz](http://www.woc2008.cz)



## "Bohemaland", Zlaté Hory (CZ)

All accommodation rooms are located within 200mts from the Bohemaland central building, which houses also restaurant, bar, meeting rooms, sport hall, sauna, jacuzzi and fitness room.

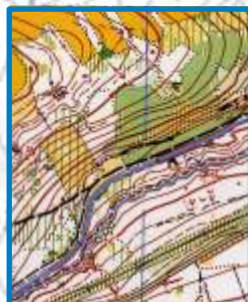
The Bohemaland Sport Centre also offers exterior swimming pool, football, tennis and minigolf playgrounds.

**ACCOMMODATION:** Sport Centre Bohemaland offers more than 500 beds in 5 categories:

- hotel type A3 (luxury 2-and 3-bed rooms with WC and shower, TV): 30 eur/person/night
- hotel type A2 (2-bed rooms with WC and shower, TV): 20 eur/person/night
- hotel type A1 (3-bed rooms with WC and shower, TV): 17 eur/person/night
- hostel type (2- and 3-bed rooms, two rooms sharing WC and shower): 15 eur/person/night
- bungalows (-bed bungalows with shared WC and shower): 12 eur/person/night

**BOARDING:** Bohemaland restaurant offers wide menu selection according your preferences:

- breakfast 4 eur/person/day, half-board 8 eur/person/day, full-board 12 eur/person/day
- vegetarian and special menus available on request



### ZLATÉ HORY

*Výr v kámen* (1:10.000)  
*Údolí zlatých štol* (1:10.000)

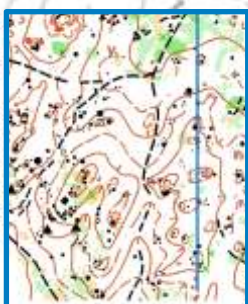
relevant to WOC long and middle terrain



### ZLATÉ HORY

*Údolí zlatých štol*  
(1: 5.000)

relevant to WOC sprint terrain



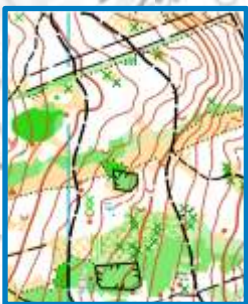
### VIDNAVA

*Vidnava* (1:10.000)  
partly relevant to WOC long and middle terrain

*Kaltenštejn* (1:10.000)  
relevant to WOC long and middle terrains

### MAPS AND TRAINING PRICES

Clear map (laser print):	3 EUR
Map with controls (laser print)	5 EUR
Entry fee Czech Meeting 2007	16 EUR/2races
Training with SI time-keeping	20 EUR /team



*Adamov* (1:10.000)  
*Dlouhá Voda* (1:10.000)

relevant to WOC long and middle terrains

**HANA**  
ORIENTEERING S.R.O.